



**FEASYCOM**®

# **FSC-DB215 Bluetooth Dev Board**

## **User Guide**

Release 1.0



# Table of contents

<b>1</b>	<b>Introduction</b>	<b>1</b>
<b>2</b>	<b>Product parameter</b>	<b>2</b>
<b>3</b>	<b>Product description</b>	<b>3</b>
3.1	Picture . . . . .	3
3.2	LE AUDIO operating instruction . . . . .	4
<b>4</b>	<b>Appendix</b>	<b>9</b>
4.1	Programming User Guide . . . . .	9
4.2	Download PDF version . . . . .	9

Shenzhen Feasycom Co., Ltd

# Chapter 1

## Introduction

This development board supports Bluetooth 5.2 specifications, backward compatible with Bluetooth 2.1 and 3.0 specifications, and supports simultaneous operation of audio streams (calls, music) and data channels (Classic SPP, LE GATT).

Supports profiles such as HFP, A2DP, AVRCP, SPP, GATT, and also supports functions such as le audio broadcasting.

This document mainly describes the functions of the Bluetooth Le Audio solution and its operation instructions in conjunction with the development board

Shenzhen Feiyang.com Co., Ltd

## Chapter 2

### Product parameter

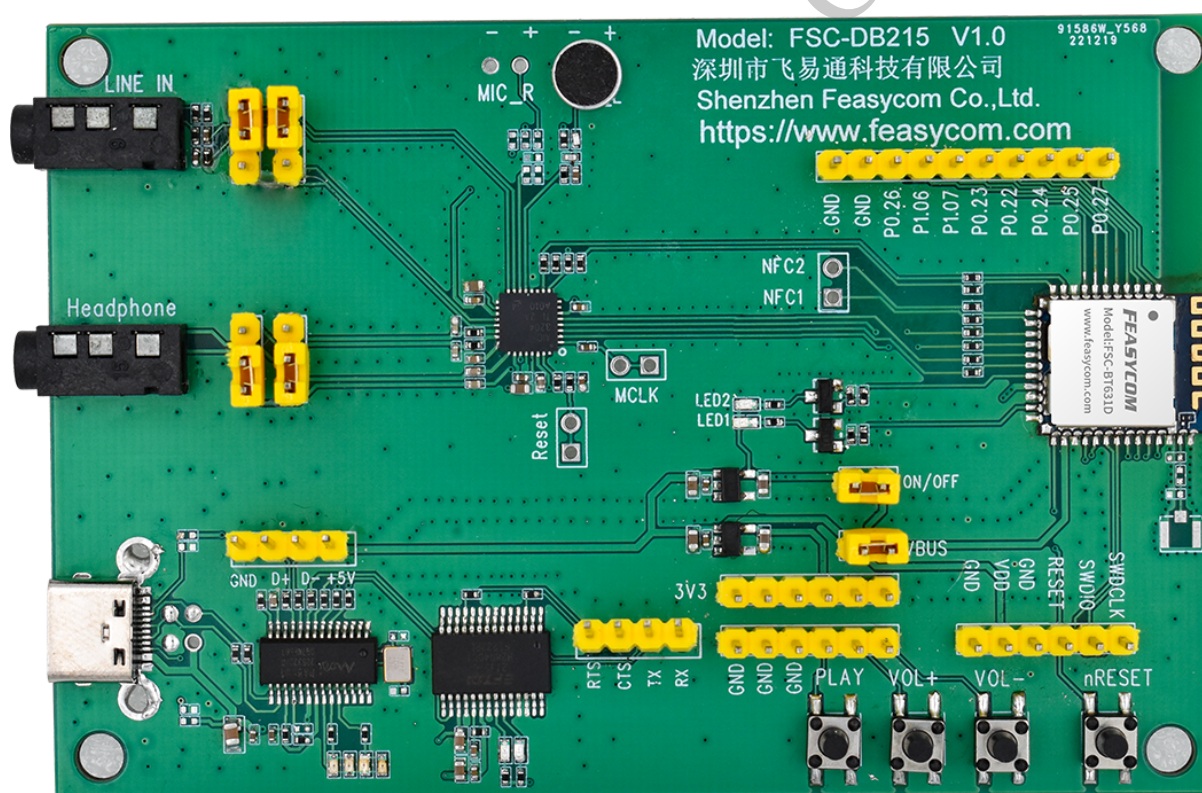
Features	Implementation
Version	5.2 dual mode
Working frequency	2.402 - 2.480 GHz
Power supply	USB
Serial port	115200,N,8,1
Distance	<50M(external antenna)
Temperature	-40°C to +85°C

Shenzhen Feasitron Co., Ltd

# Chapter 3

## Product description

### 3.1 Picture

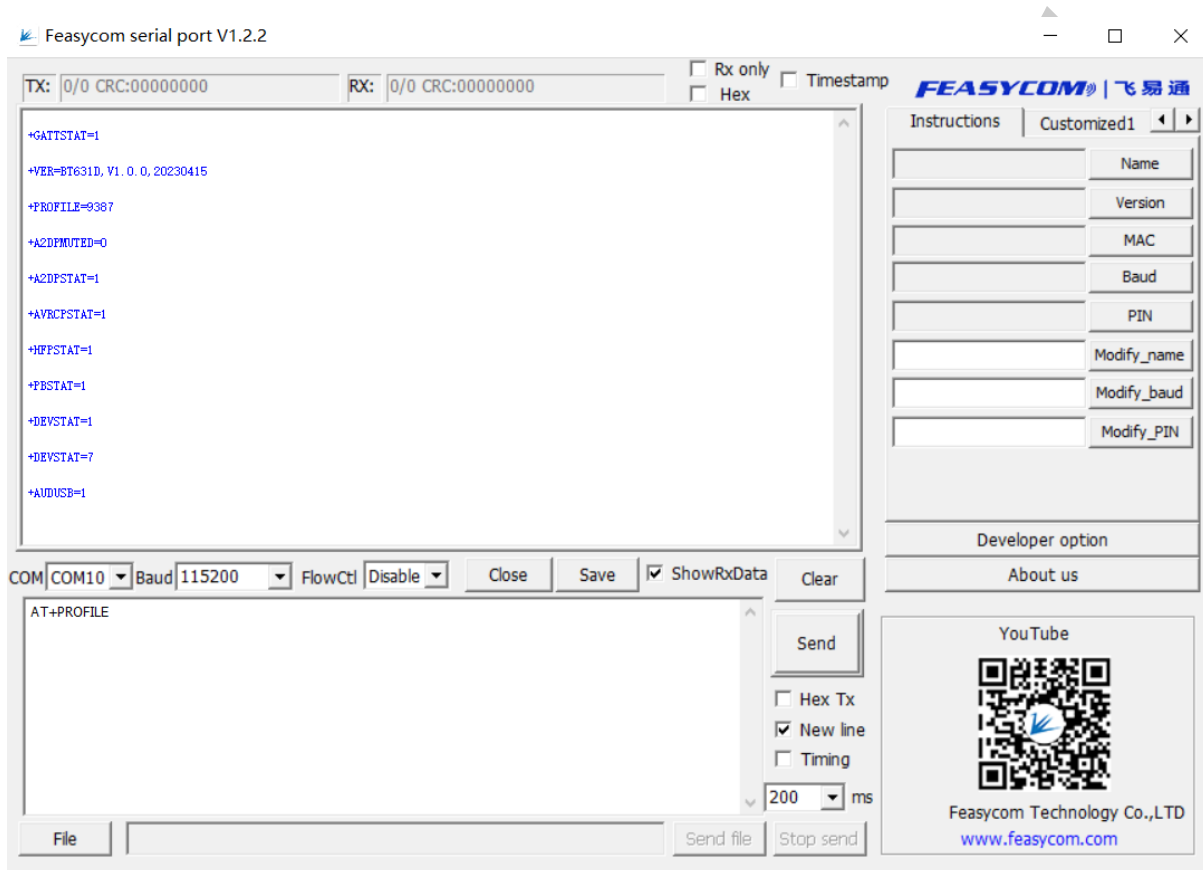


**Note:** Due to the high RF requirements for the Bluetooth module in this application scenario, the module antenna is set as an external device. It is also recommended that after the customer's terminal product design is completed, the circuit diagram/PCB of the Bluetooth part should be sent to our hardware department for verification. After confirming that there are no issues, the

board can be printed

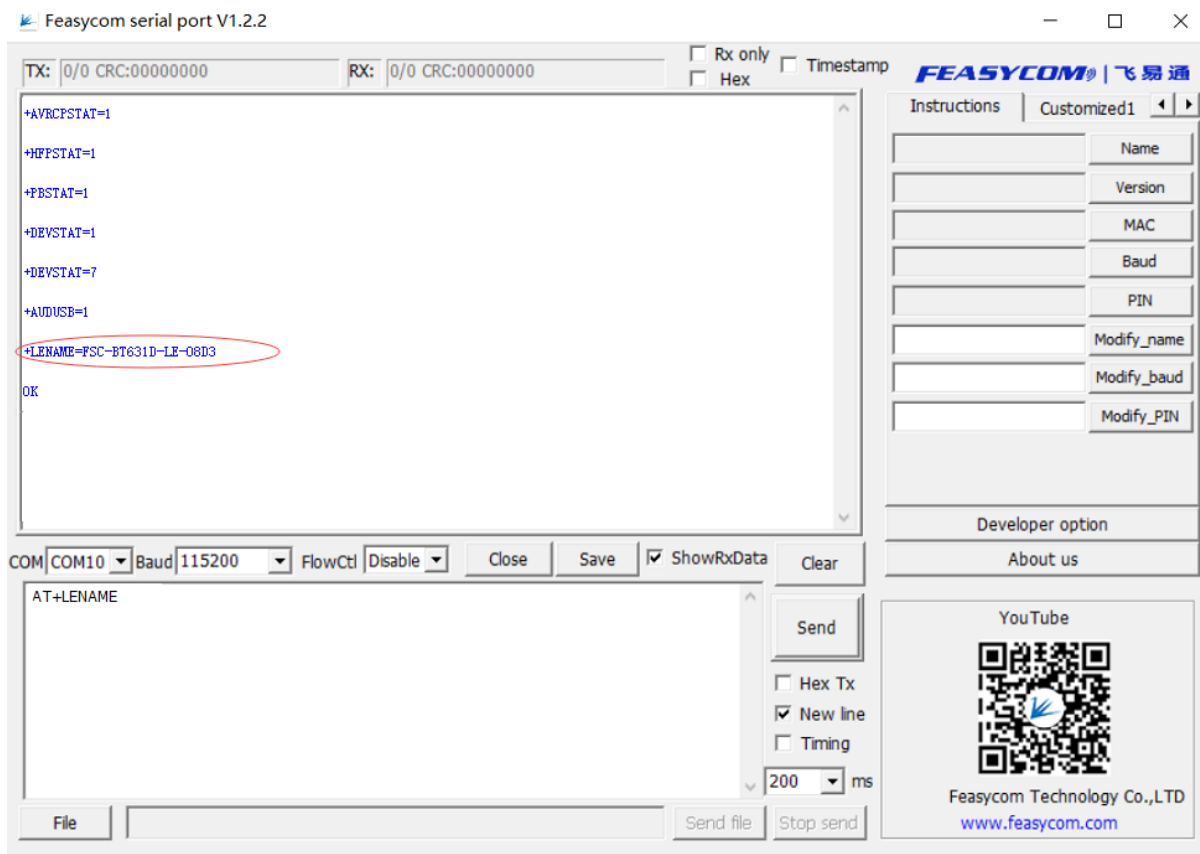
## 3.2 LE AUDIO operating instruction

- (1).Connect DB1 and PC by Type-C data cable
- (2).After connected, PC will recognize the serial port COMx

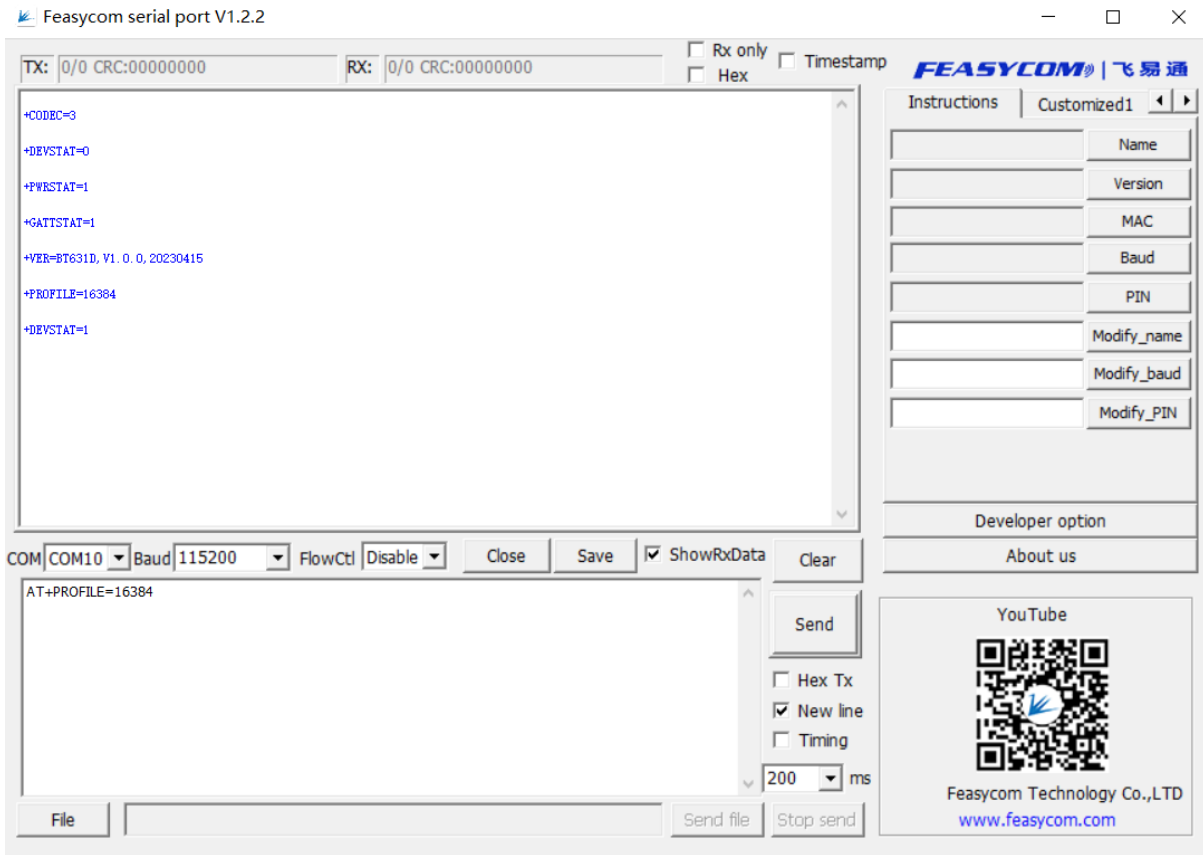


The default program is USB broadcast mode, and the computer will recognize the sound card name: FSC-BT631D USB Audio

- (3).When the development board DB1 LED2 (red light) flashes, LED1 (green light) remains on. Starting to send broadcast audio data at this point
- (4).Query the development board DB1, LE AUDIO broadcast device name, by sending command: AT+LENAME



(5).Configure development board DB2 step1 and step2,and switching to receive mode, by sending AT+PROFILE=16384

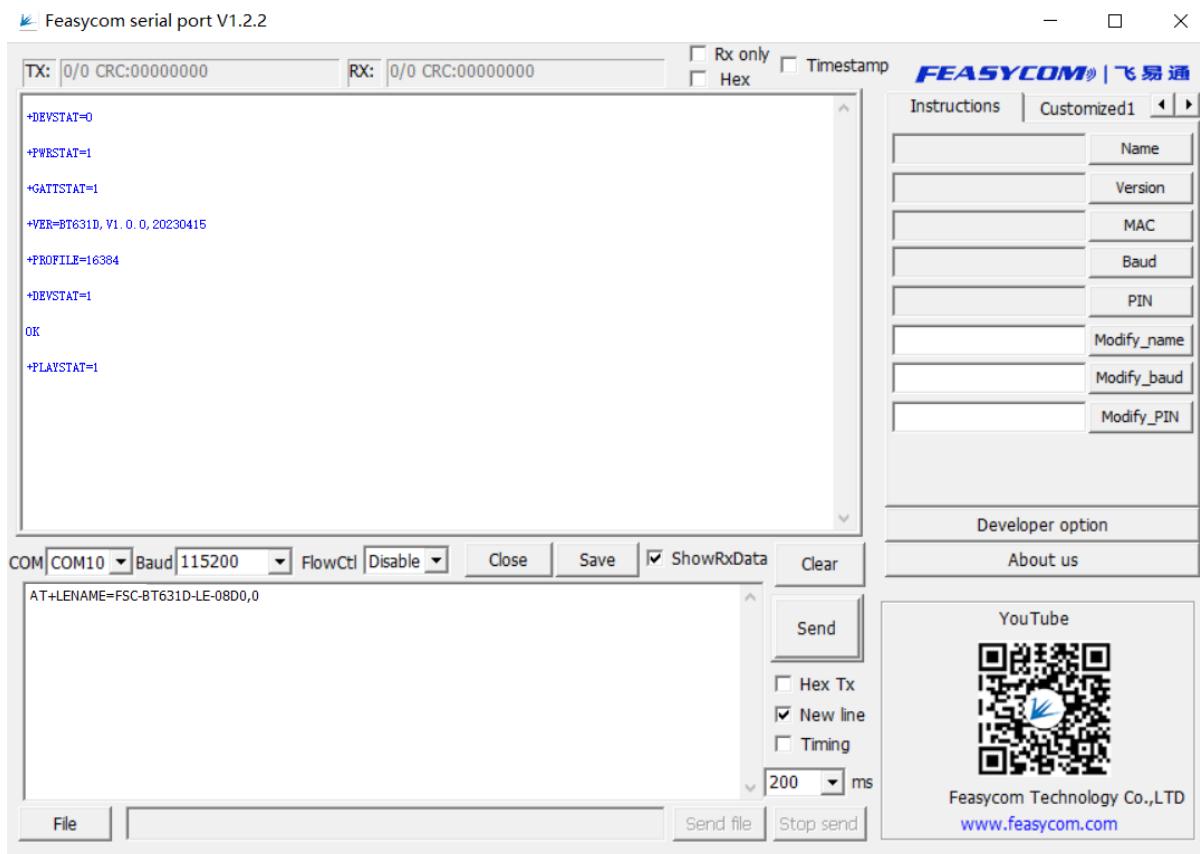


After DB2 receive mode switch successful,LED1(green light)flashes

(6).Set the Bluetooth module name to receive broadcasts on the development board DB2:

AT+LENAME=FSC-BT631D-LE-08D0,0





- (7).When the development board DB2 LED1 (green light) remains on, it begins to receive broadcast audio data
- (8).PC opens music player, plays music, development board A, B Headphone will output music
- (9).The development board supports AT command to switch sound sources and configure them into two modes: USB and line in. The default is USB mode

USB mode: by sending AT+AUXCFG=0

LineIn mode: by sending AT+AUXCFG=1

- (10).More receiving devices are needed, just repeat the configuration of step 5 and step 6, and this configuration will be saved after power failure

**Note:** The module now supports mobile phone connection for playing music and making phone calls. When the phone is successfully connected, the le audio broadcast function is turned off by default. When the phone is disconnected, the Le audio broadcast function will be opened. Subsequent module versions will support functions that broadcasting audio while phone con-

necting

---

Shenzhen Feasycom Co., Ltd

# Chapter 4

## Appendix

### 4.1 Programming User Guide

More detail about Programming User Guide, please refer to: [Programming Manual](#)

### 4.2 Download PDF version

[Download PDF](#)

Shenzhen Feasycom Co., Ltd