



FSC-DB006 USB Bluetooth Dev Board User Guide

Type: Dev Board User Guide

Version: V1.1

Date: 2019.08.29

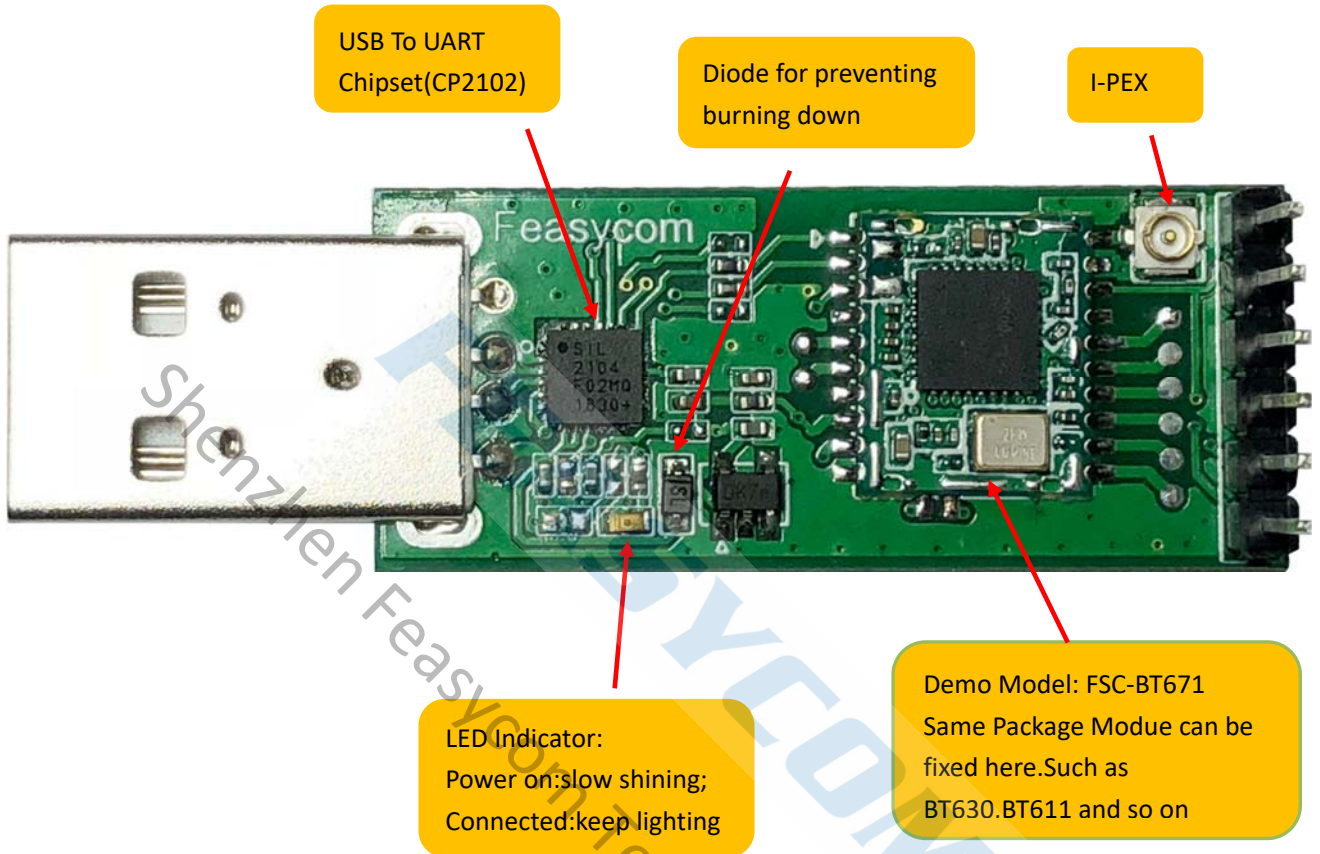
Shenzhen Feasycom Technology Co., Ltd

Shenzhen Feasycom Technology Co.,Ltd.

Telephone: 86-755-27924639

www.feasycom.com

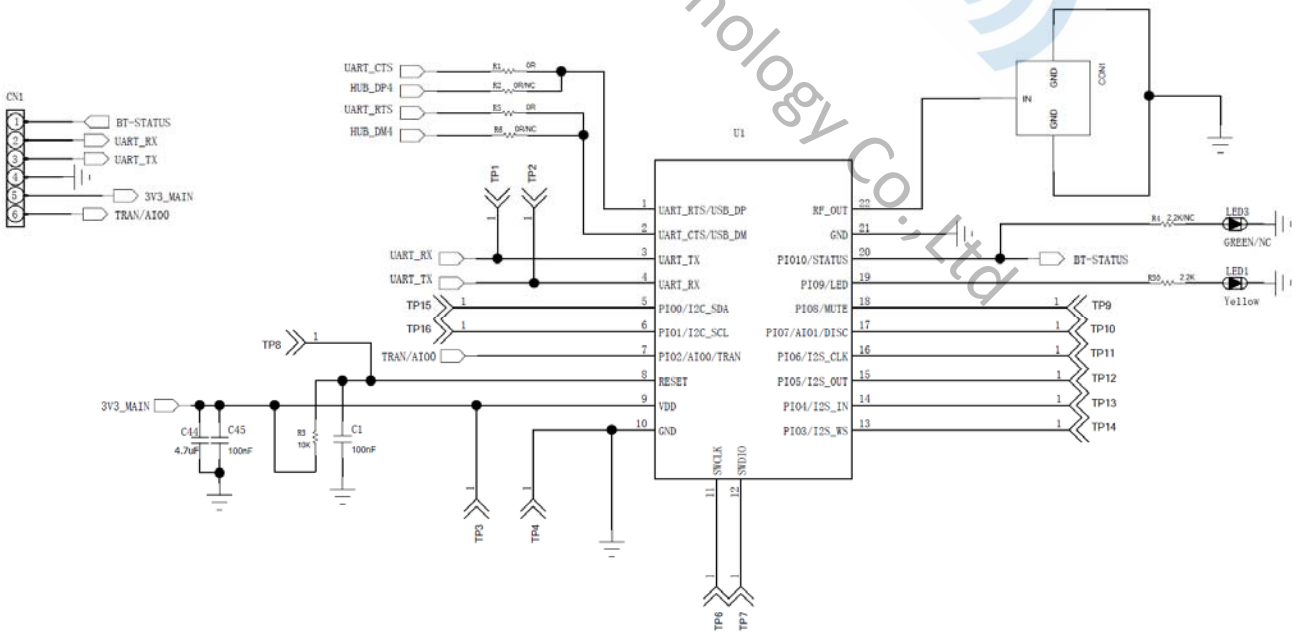
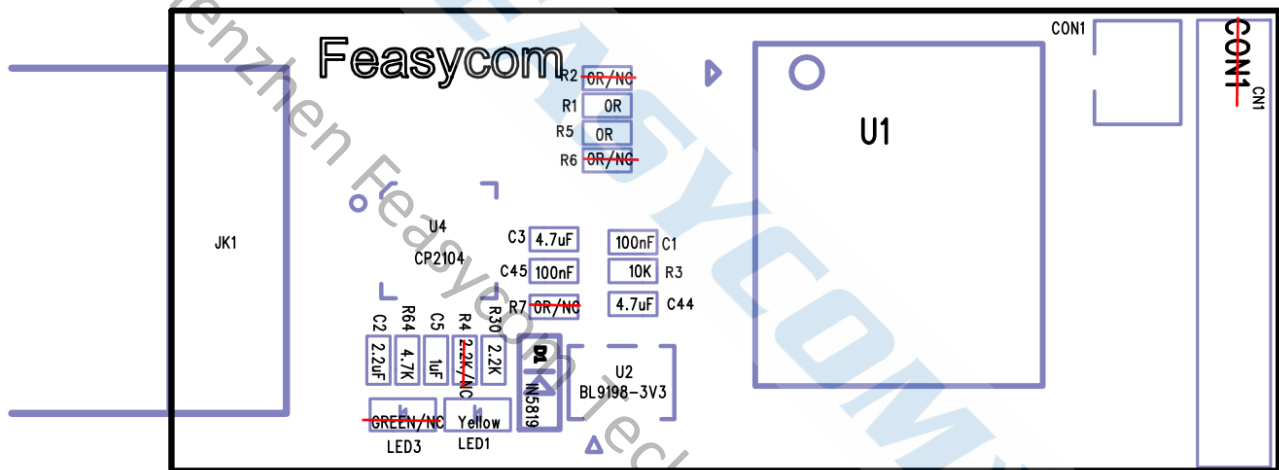
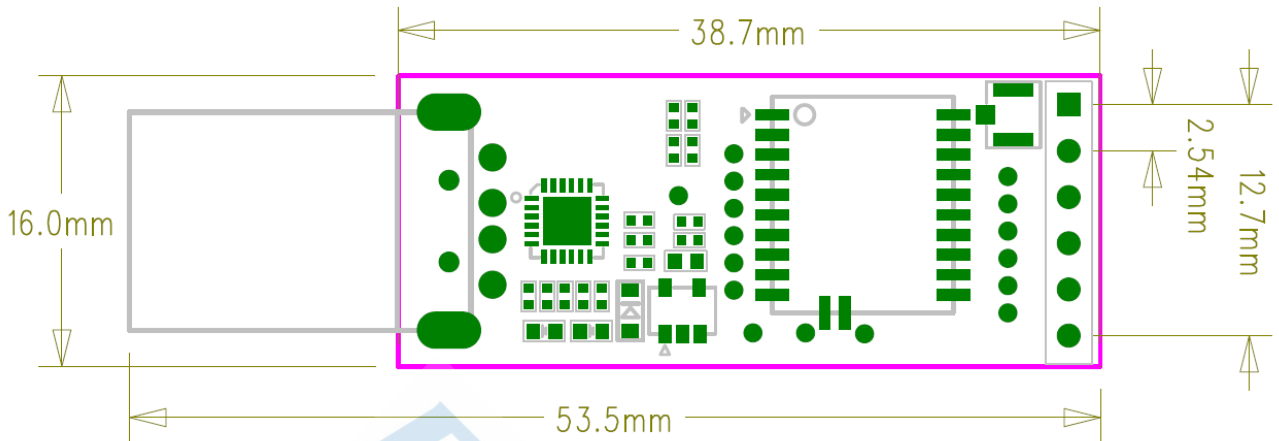
FSC-DB006 DISCOVERY LITE Front Image

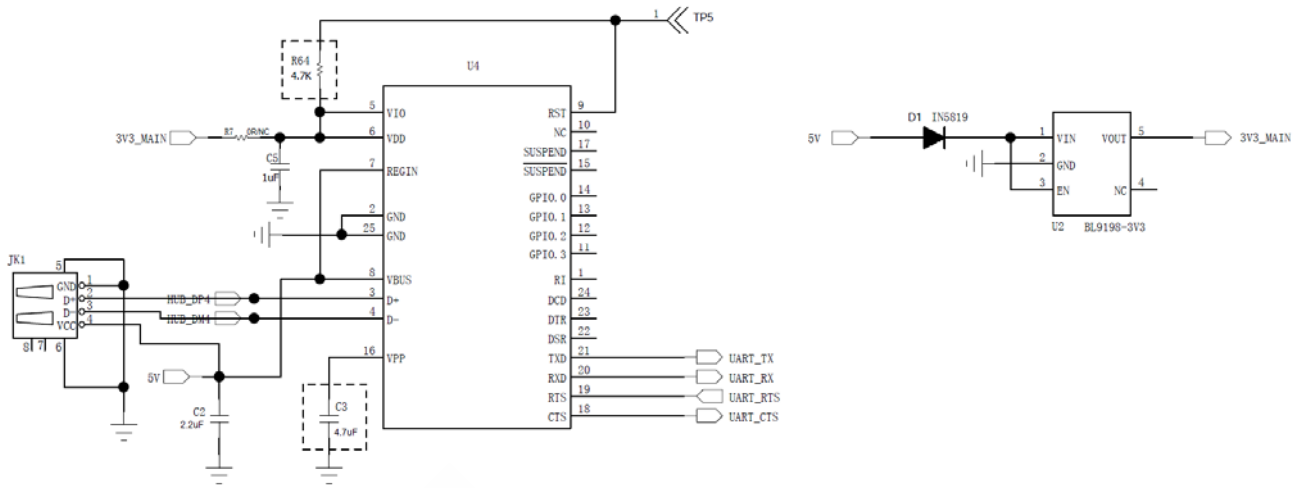


FSC-DB006 DISCOVERY LITE Back Image



FSC-DB006 dimension , location map and schematic



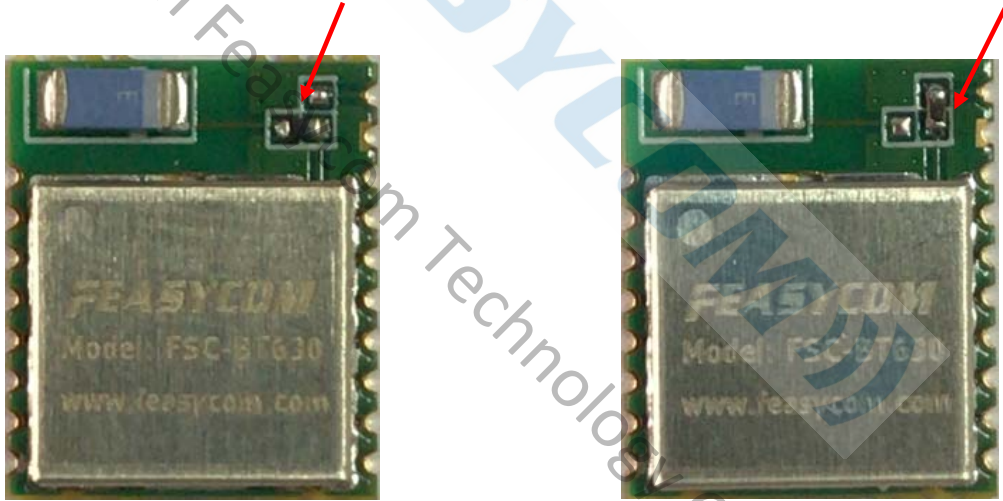


FSC-BT630 have Ceramic antenna , Add I-PEX:

Shenzhen Feasycom Technology Co., Ltd

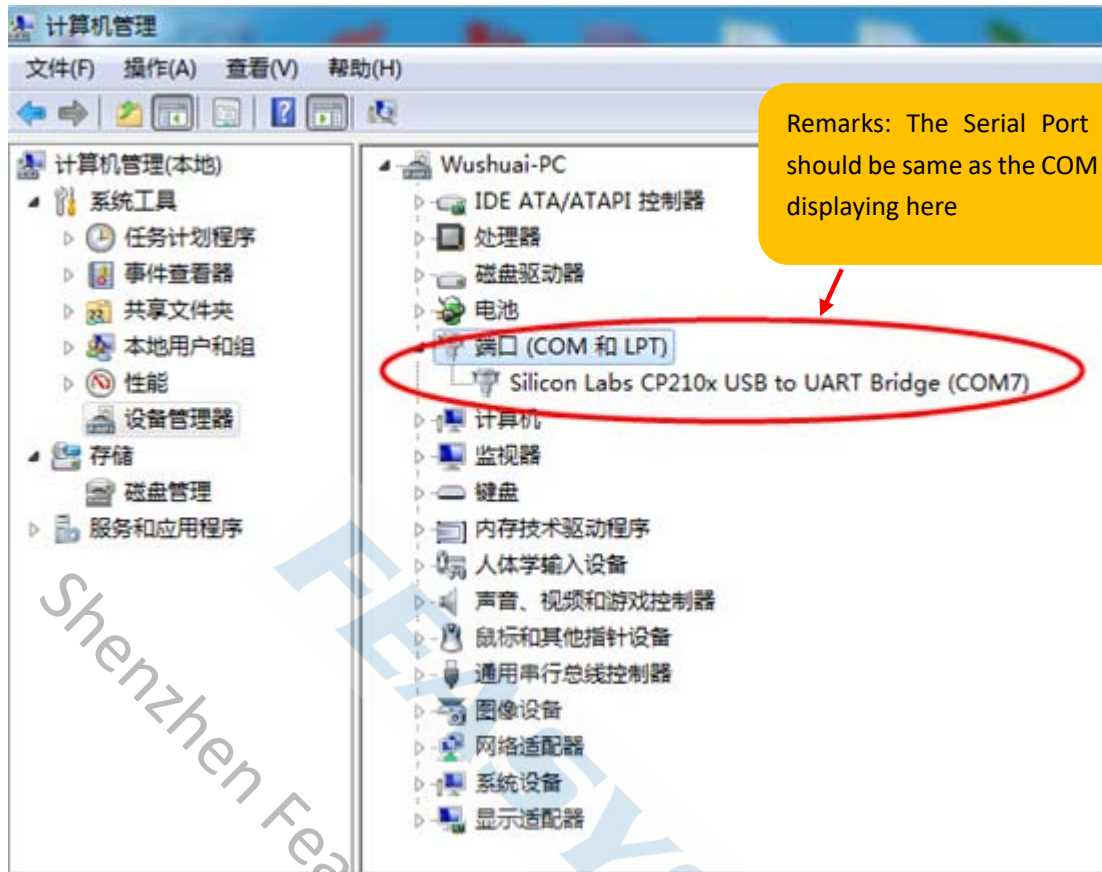
Landscape resistor

vertical resistor (I-PEX)



P1. Test Environment

1. Installed the Serial Port Driver, can get the COM NO of the Device Management from the Computer .



2. APP Download (Android & iOS)



1) Android APP **BTComm**, please download from our www.feasycom.com or contact the sales man.



2) IOS APP **BLE Assistant**, download from appstore or contact the sales man.

P2. Using Steps:

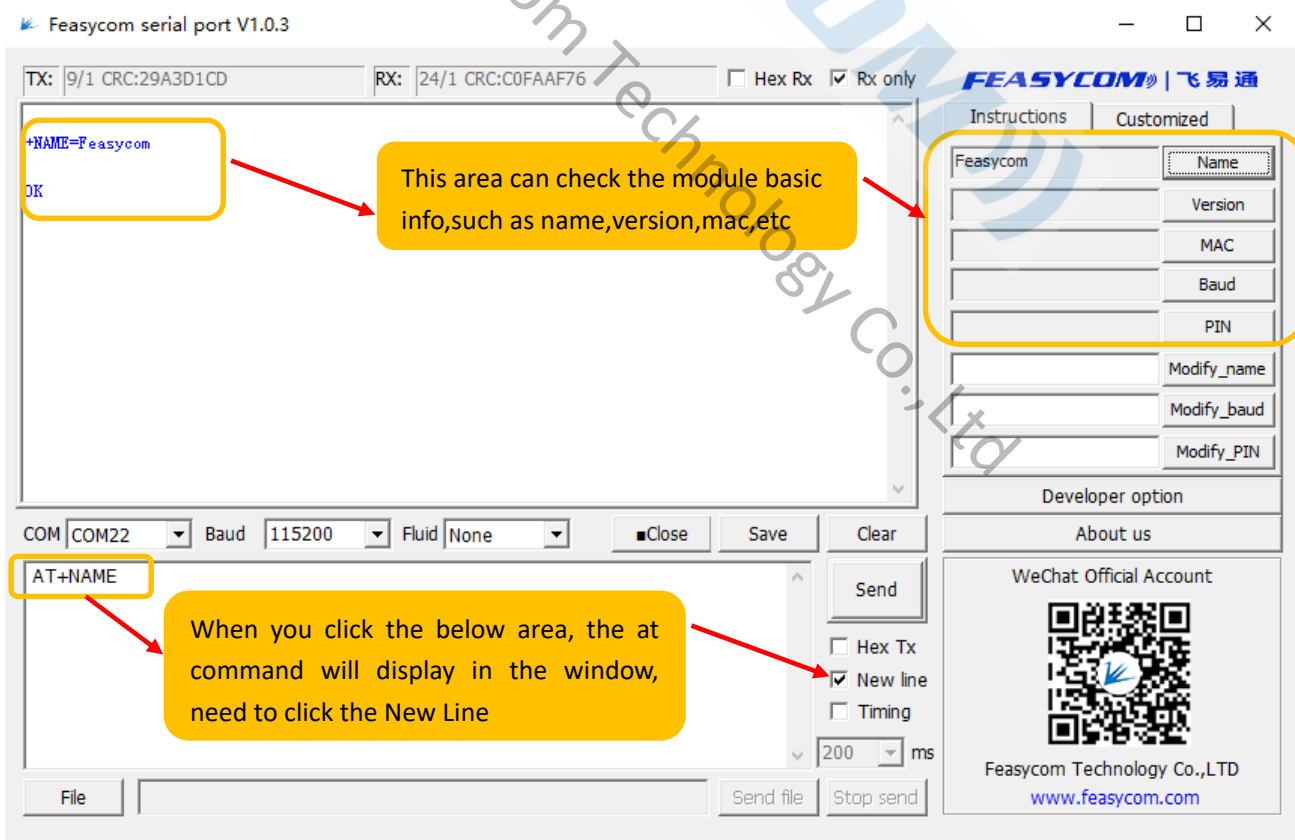
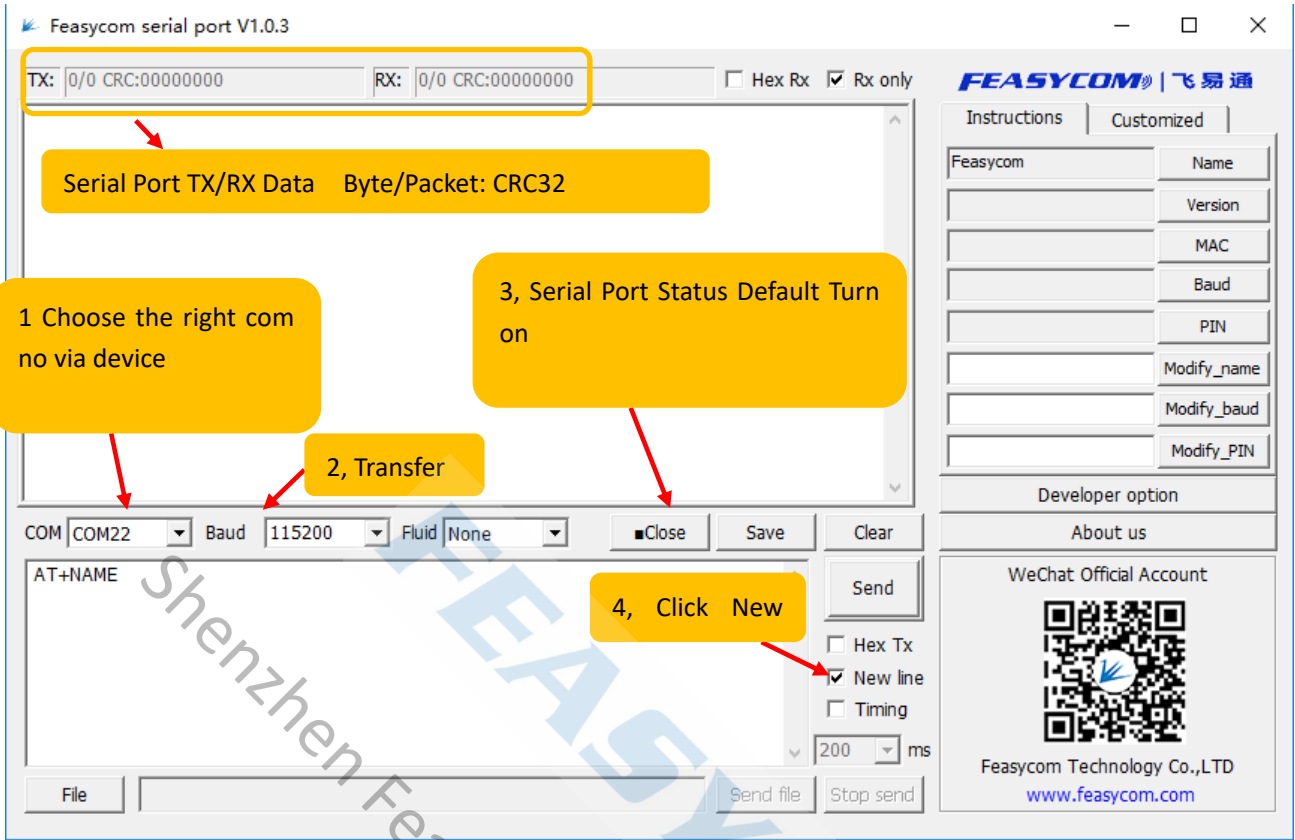
1, Connect to the computer's USB Port, LED Indicator : slow shinning, this means the module is under being search & connect status. (Take our FSC-BT671, as an example)

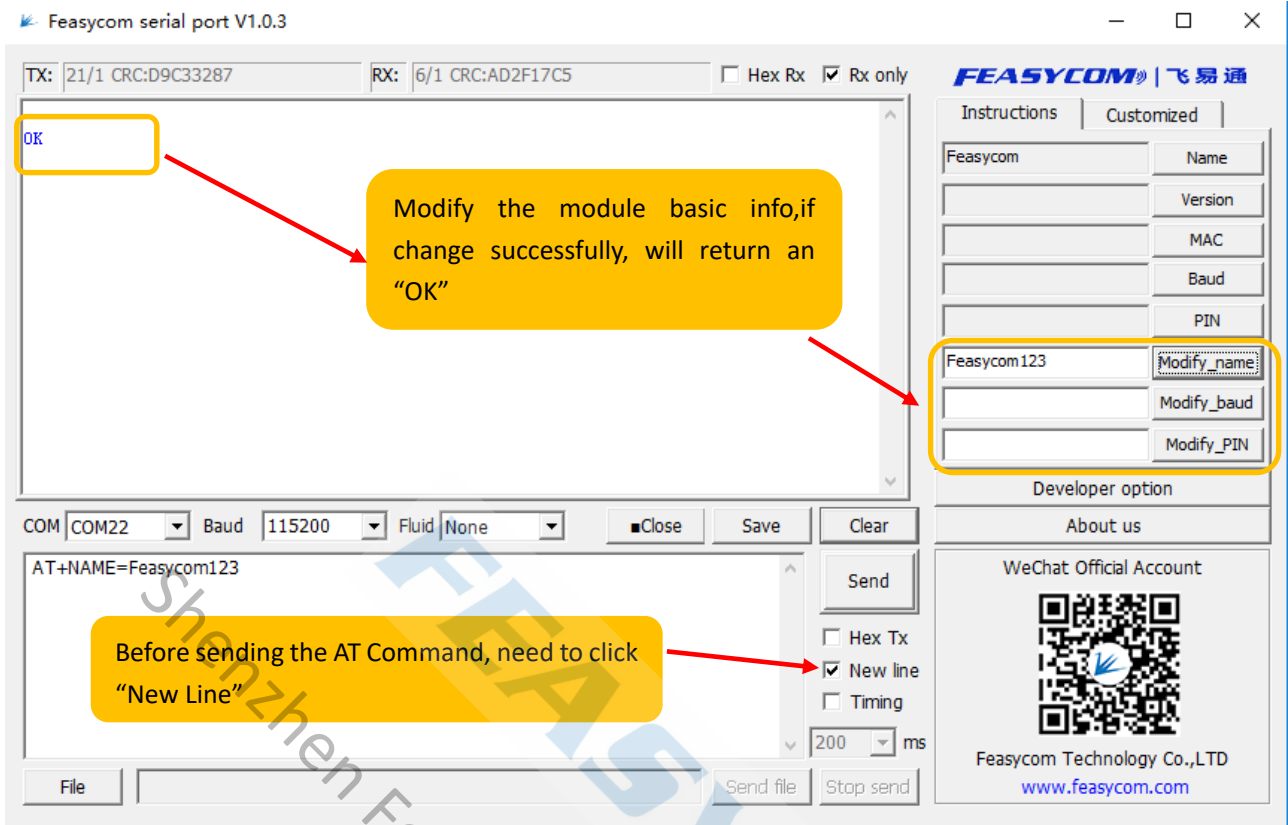


If module connect to the smart phone successfully, the LED Indicator is keeping lighting all the time



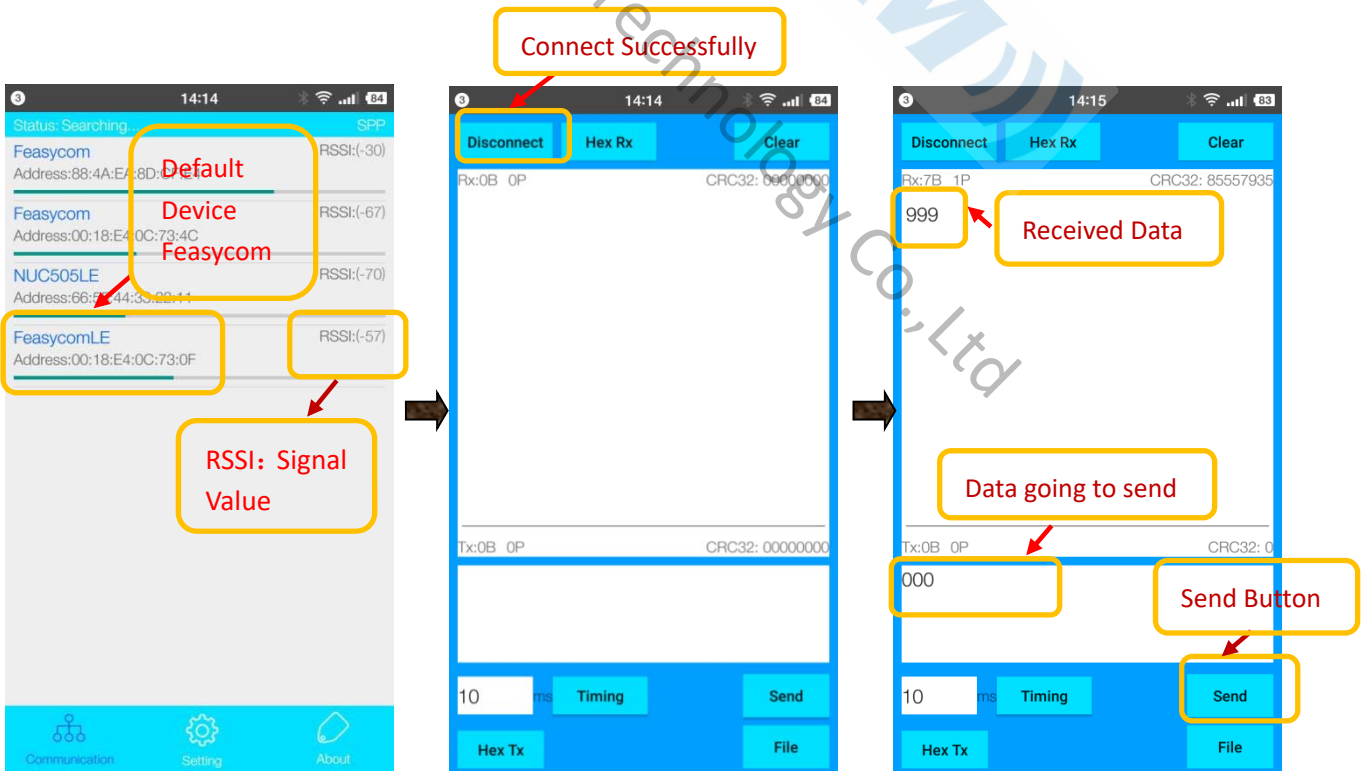
2, Open Feasycom Serial Port Tool Via PC, no need to install the software, setting as below showing.

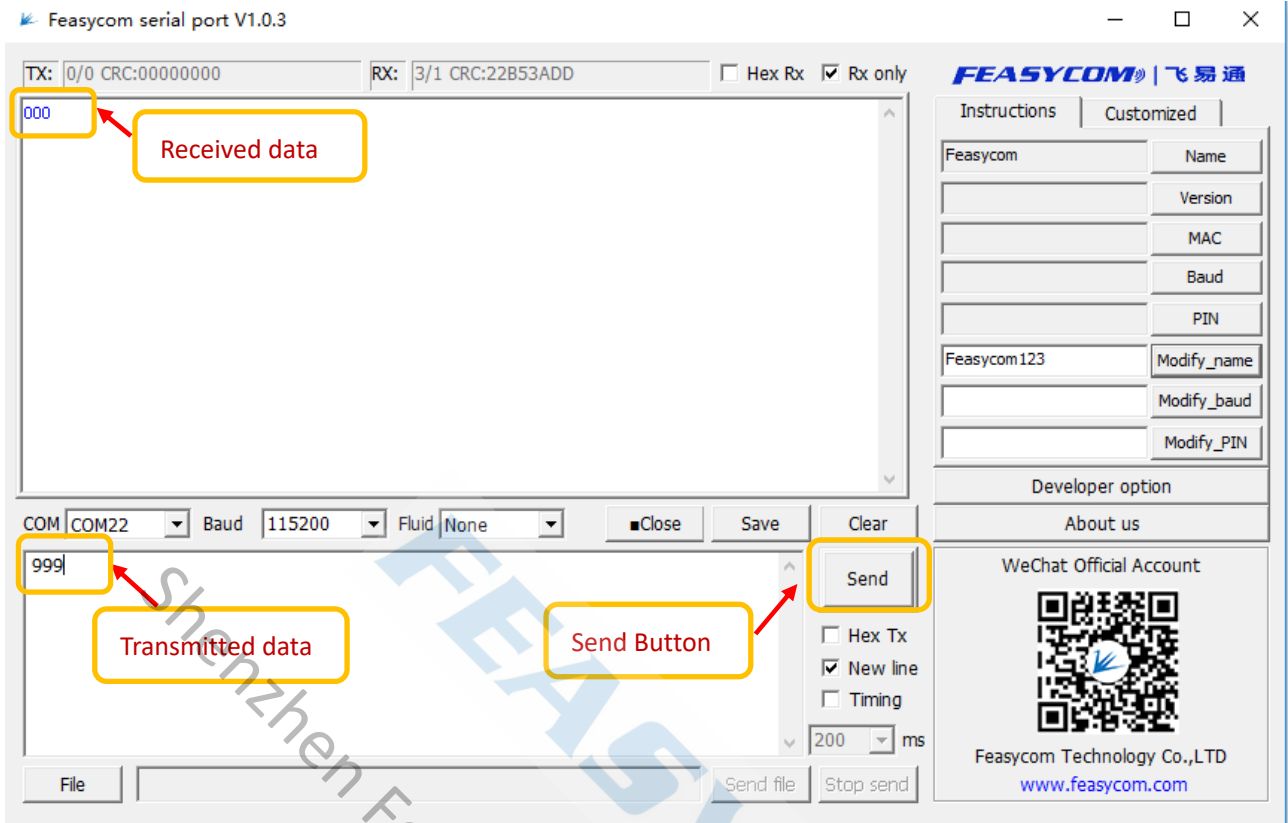




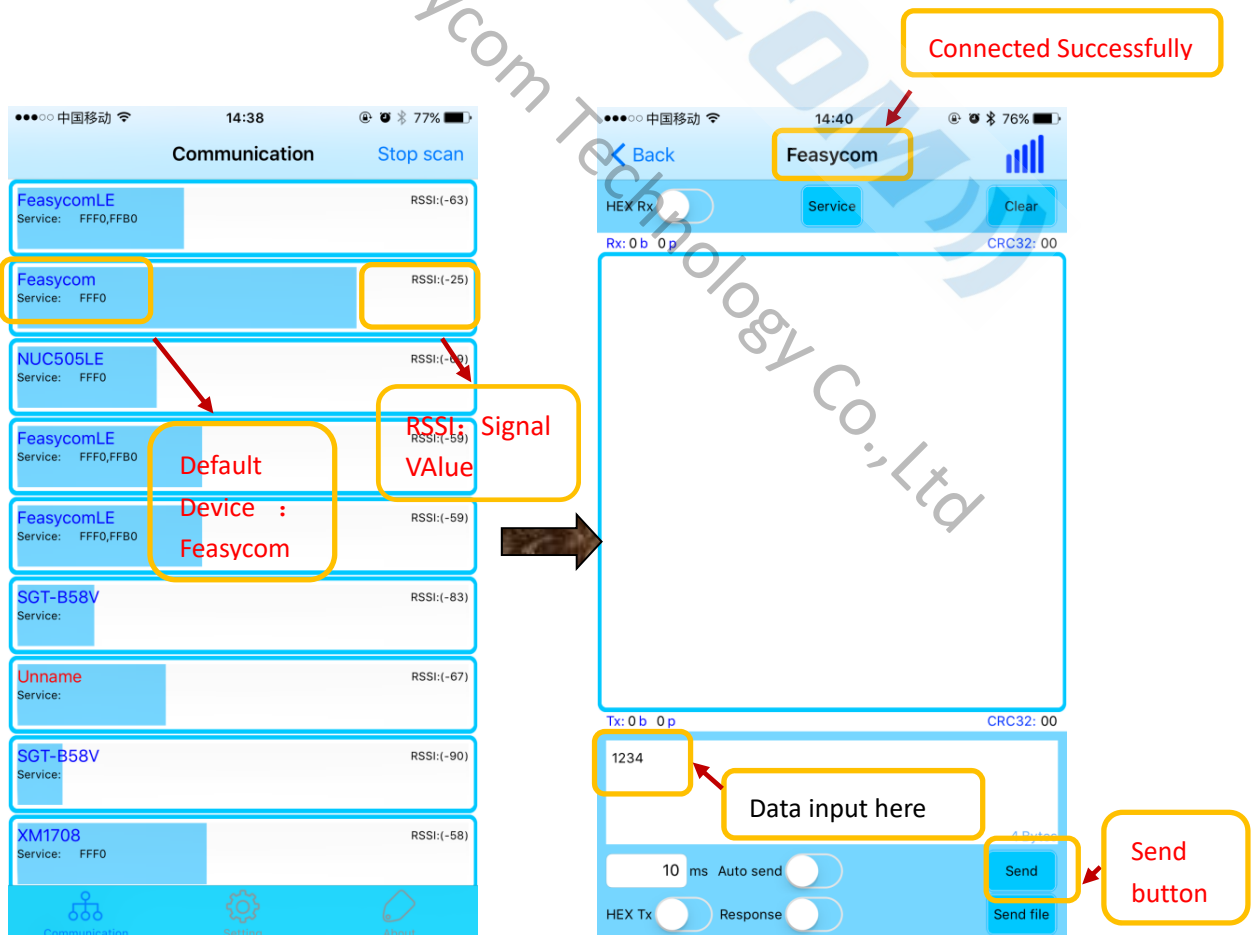
3, Smart Phone APP connect to the module, please follow the below steps (Turn on Bluetooth of Smart phone)

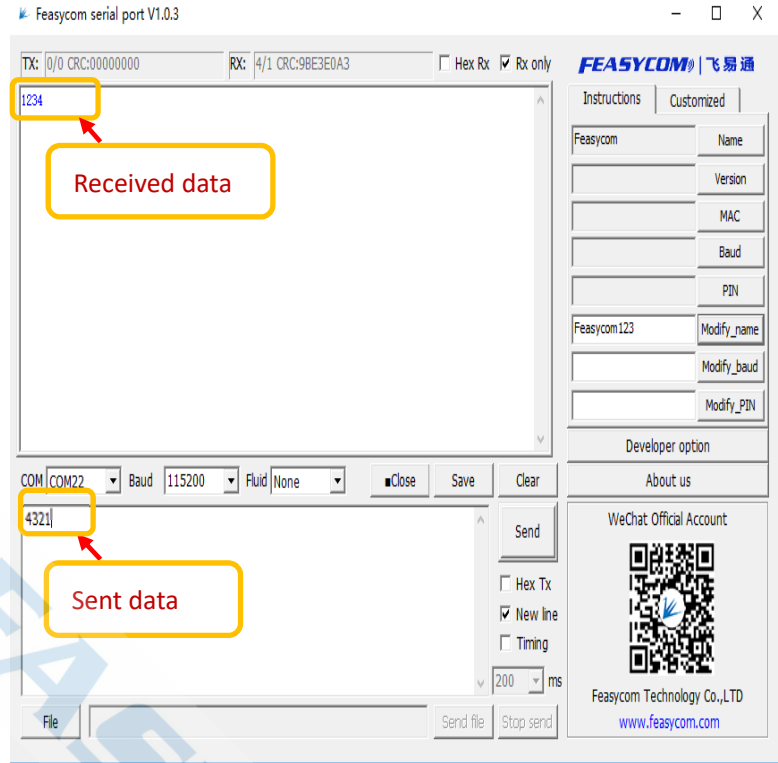
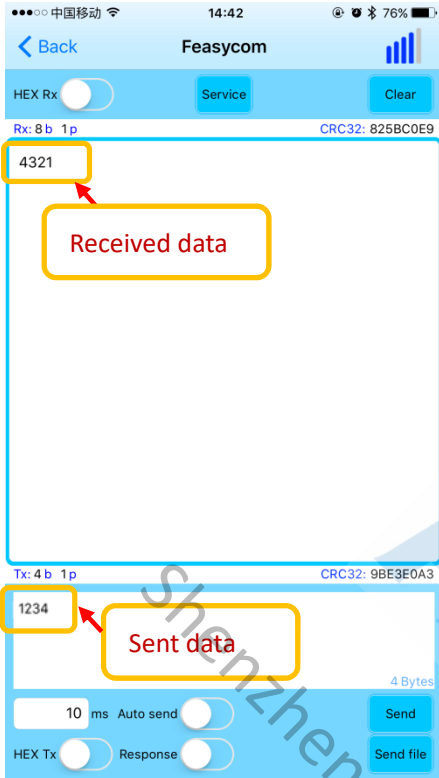
- 1) Android System : Open BTComm APP, search the target Bluetooth device, click auto-connect, glide the interface can get the newest searching devices.





2) IOS System: Open BLE Assistant APP, search the target Bluetooth device,click auto-connect, glide the interface can get the newest searching devices.



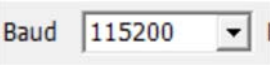


P3、FAQ

Q1: Power On Module, RX Command ,no feedback :

1> Check the indicator Light : Flash or not

2>Make sure the COM NO : Correct or not

a)  Baud Rate Parameter: 115200

b)  Serial Port Close or Open

c) COM NO, whether is same as the device management of computer displaying

d) RXD Pin connect to Module TXD Pin, TXD Pin connect to Module RXD Pin.

e)  whether click this button.

Q2: Check the module whether under connection status

Remarks: If the module already connected to the smart phone, the module received AT command information will be sent to the smart phone as the common data information, will not execute the AT Command.

Q3: If already follow the steps as above showing, still can not identify the AT Command, better to make the module connect the smart phone APP, using the APP to send "12345" to the module, using the OSC to monitor the TXD of the module, whether there coming out the wave shape. Send the data to the module, using the OSC to monitor the RXD of the module, whether there coming out the wave shape, meanwhile, check the smartphone get the data or not.

Q4: Android Smart Phone why can not use the BLE:

1. Some old android smart phone not support BLE(We suggest to use our Bluetooth dual mode module)

FEASYCOM
Shenzhen Feasycom Technology Co., Ltd