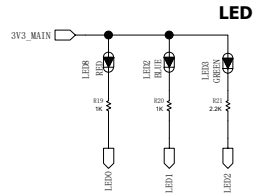
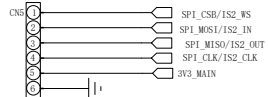


REVISION RECORD			
LTR	ECO NO:	APPROVED:	DATE:

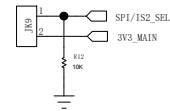
Q1 Q2 Q3 Q4



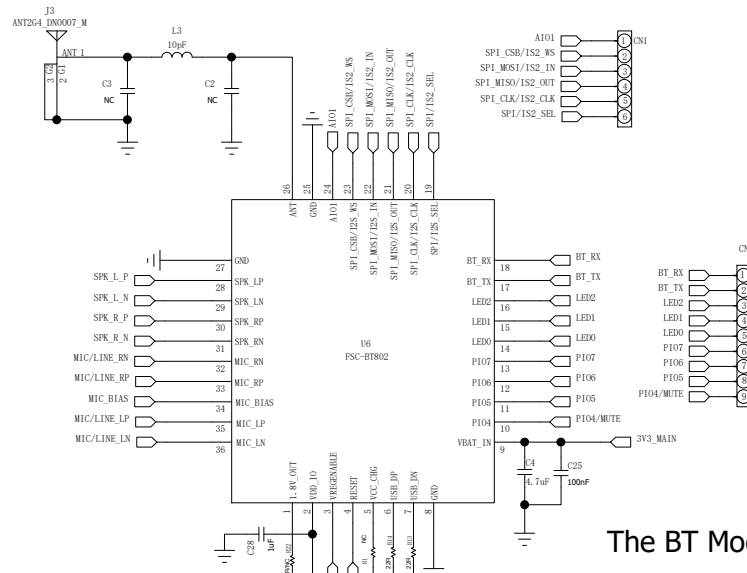
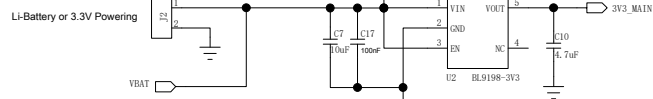
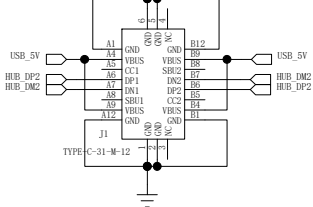
SPI Port



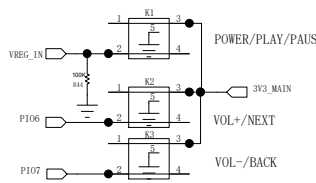
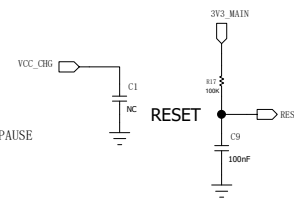
High Level=SPI
Low Level=I2S



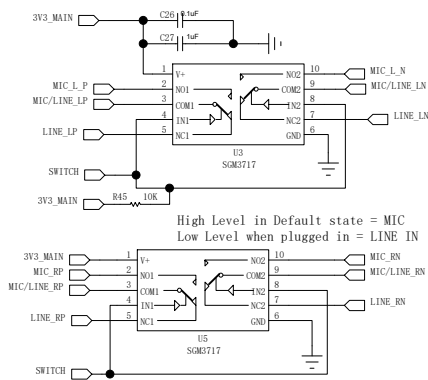
USB2.0 Port



The BT Module On This Dev Board Is:
FSC-BT802

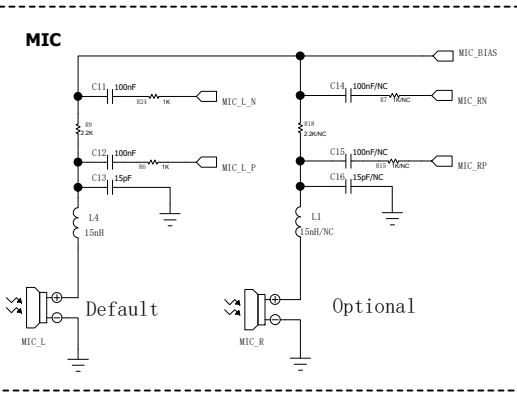
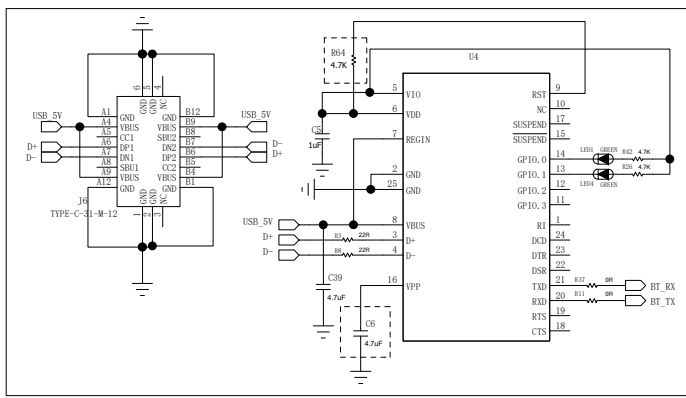
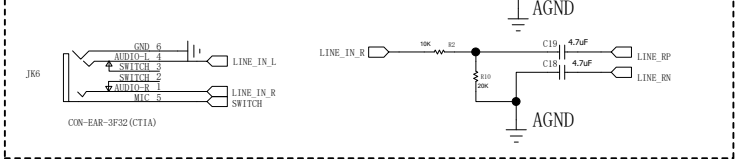


Used to switch between LINE in and MIC



High Level in Default state = MIC
Low Level when plugged in = LINE IN

Line IN



COMPANY:		Feasycom			
TITLE:		FSC-DB103 DK Board SCH			
DRAWN:	Fish	DATED:	20190619	CODE:	SIZE:
CHECKED:		DATED:		DRAWING NO:	REV:
QUALITY CONTROL:		DATED:			
RELEASED:		DATED:	20190619	SCALE:	1 OF 1