



**FEASYCOM**

# **FSC-BP101Y**

**Get Started**

**Version 1.0**

# 1 Introduction

FSC-BP101Y is a Bluetooth USB Dongle Transmitter. It is mainly used to realize the communication between Windows computers and remote Bluetooth devices, without installing drivers, and it is very convenient to use.

## 1.1 Technical Facts

Bluetooth 5.0

UART programming and data interface (baudrate up to 921600bps)

Dual Core Digital Architecture

-95dBm in BLE mode

Tx Power 0dBm

Postage stamp sized form factor

Working current is 5mA

RoHS compliant



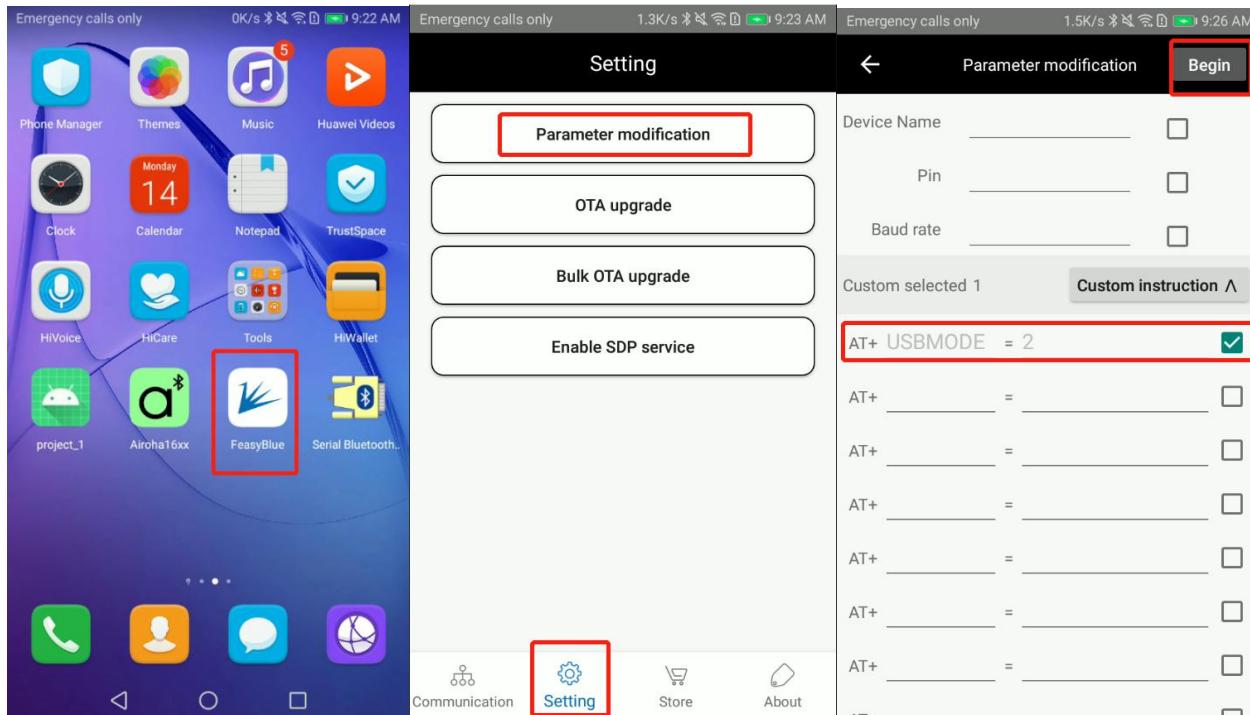
## 1.2 Bluetooth Default Settings

- Device name: **BP101Y**
- Baudrate: **115200**
- Firmware **v2.0.8**(example)
- MDOE **CDC mdoe**

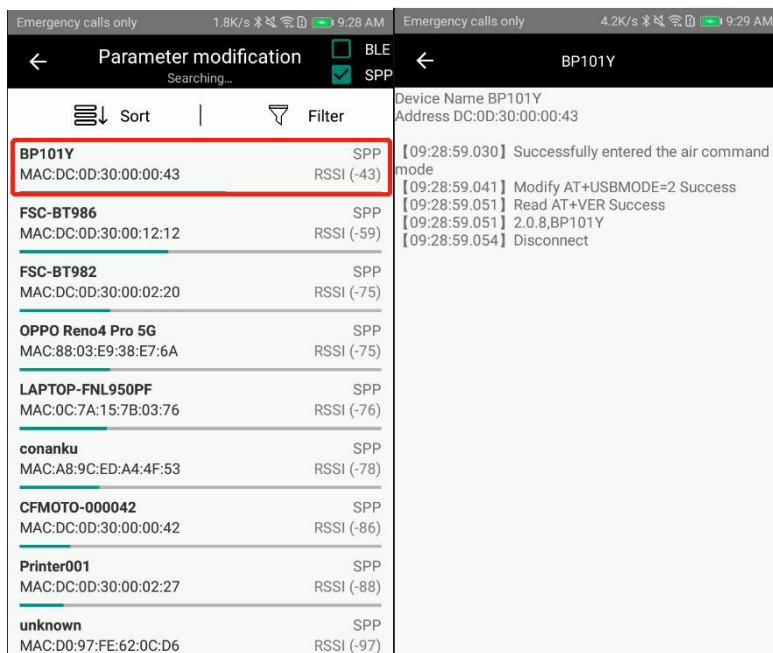
**The parameter of some versions of USBMODE may be 1 by default. If you need to switch to CDC mode, you can switch it through the air command. Please refer to the following introduction for specific methods**

## 2 Mode setting

the default mode is HID mode (keyboard), BP101Y can receive data sent by the Bluetooth host (such as FeasyBlue). It is also possible to switch to CDC mode (AT+USBMODE=2) through over-the-air commands, then the data received from the BT-master will be output through the virtual serial port. How to modify USBMODE over-the-air.



To modify the parameters, you need to enter the password: 20138888



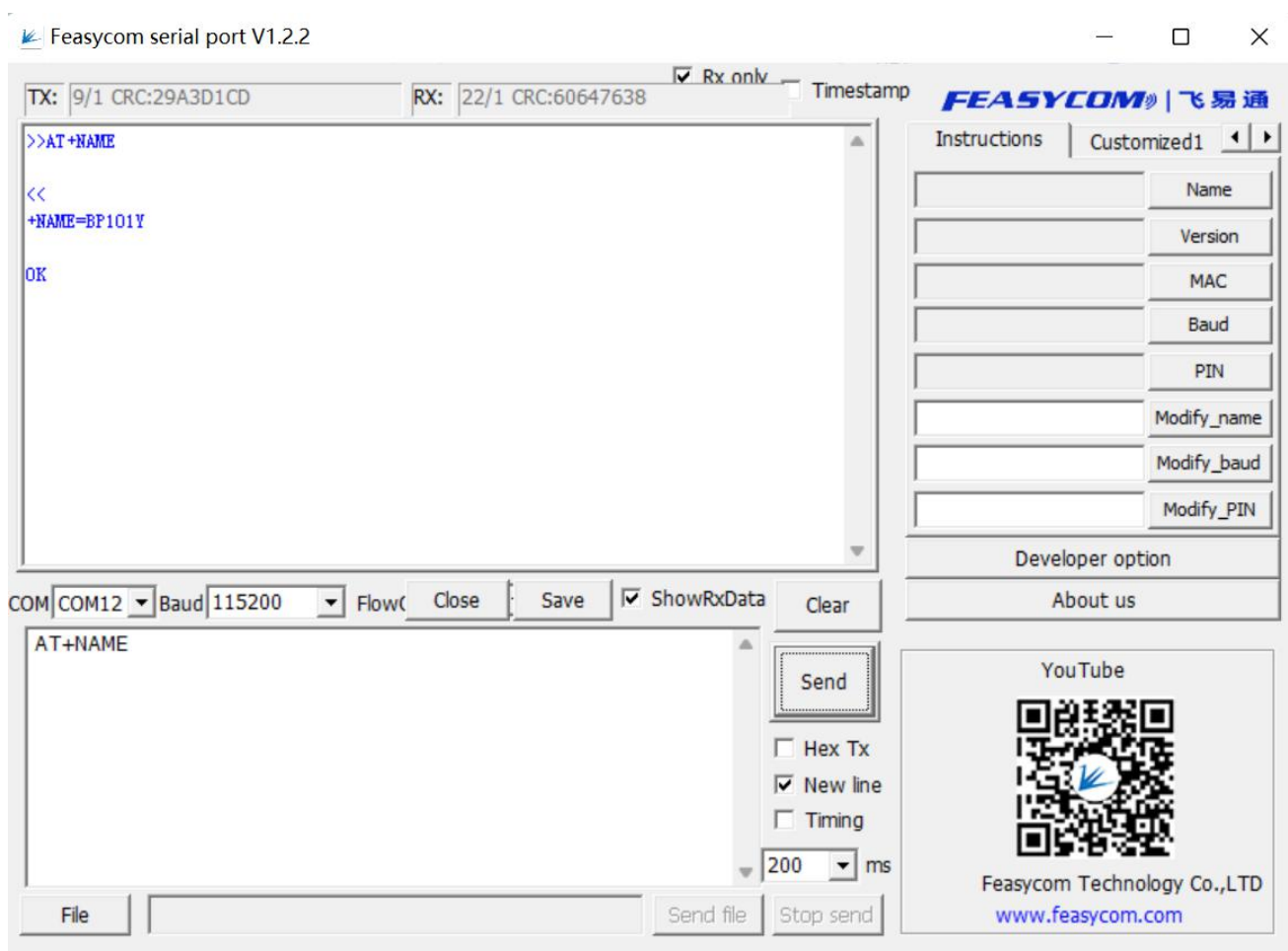
### 3 AT Commands Format

AT+ Command {=Param1{, Param2{, Param3...}} <CR> <LF>

- All commands start with "AT" , end with <CR> <LF>
- <CR> stands for "carriage return" , corresponding hex is 0x0D
- <LF> stands for "line feed" , corresponding hex is 0x0A
- If command has parameter, parameter keep behind "="
- If command has multiple parameters, parameter must be separated by ","
- If command has response, response start with <CR> <LF>, end with <CR> <LF>
- Module will always report command' s execution result using "OK" for success or "ERROR" for failure

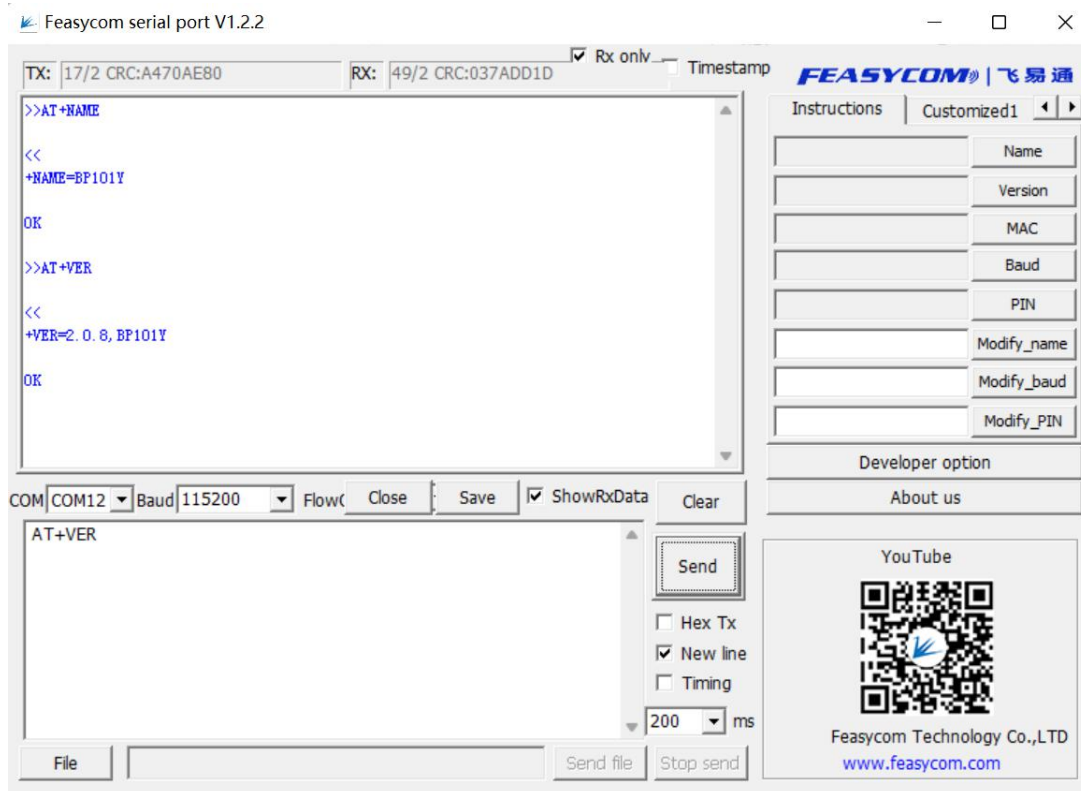
### 4 Command Configuration

Query and Set Name——AT+NAME



## FSC-BP101Y Get Started

### Query Firmware Version——AT+VER



### Set Baud Rate



For more AT commands, please refer to the document

<https://document.feasycom.com/web/#/24/412>

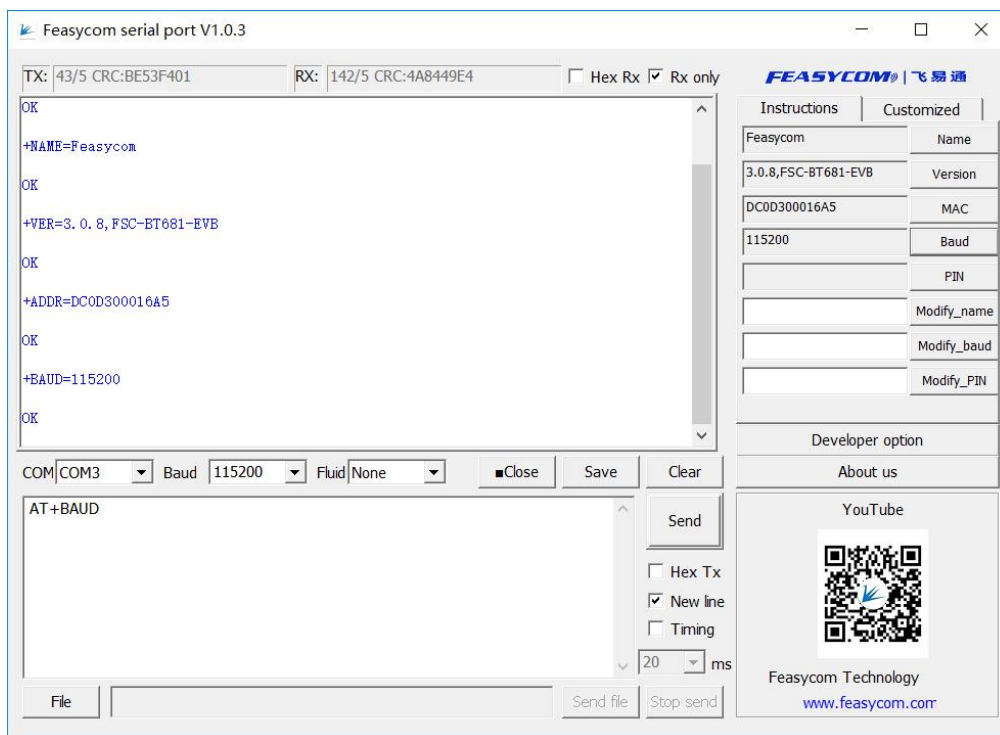
## 5 Apps and Tools

### 5.1 FeasyBlue App

FeasyBlue is a mobile app, which can be used for data transmission, air command configuration, air upgrade, etc. It is a favorite tool for engineers. You can download it in the Google application market, or contact the technical support team of Feiyitong to obtain the application. At the same time, we provide its SDK for free. On this basis, you can easily complete the secondary development.

### 5.2 Feasycom Serial Port - Windows App

Feasycom Serial Port Windows app is available on [www.feasycom.com](http://www.feasycom.com), [click here](#) to download, an operating example on windows PC:



Feasycom Serial Port Home Page

The app's features:

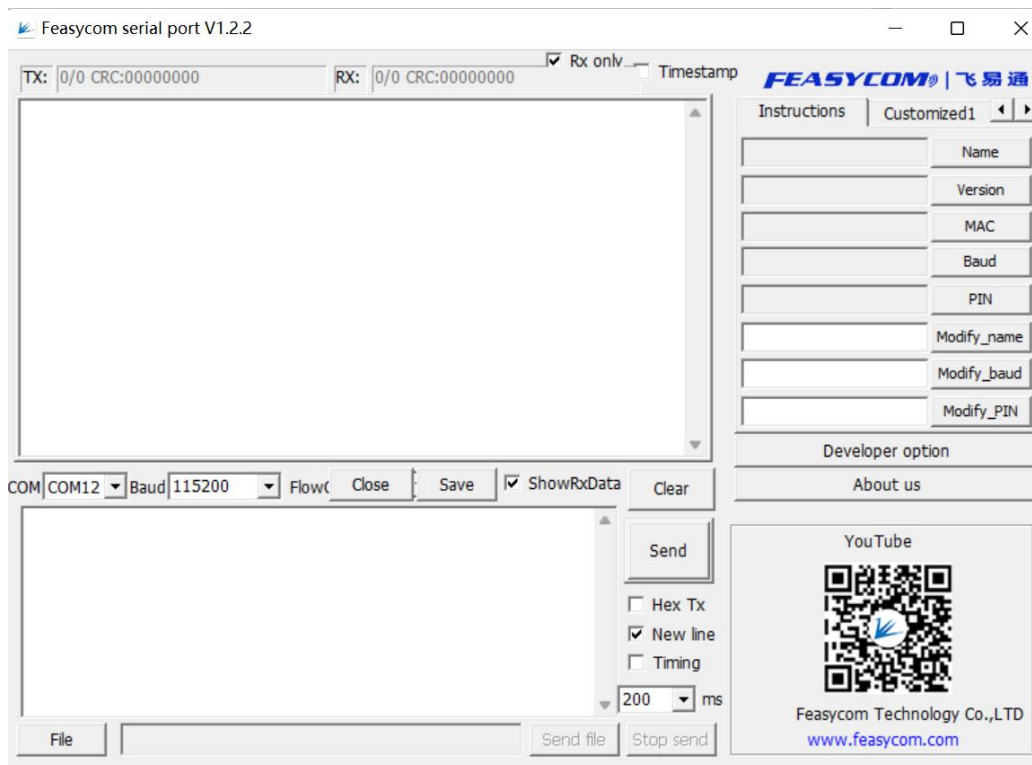
- Interfacing the module by UART.
- Communication: Data transfer.
- Configuration: Read/Write the module's parameters.

## 6 Application Scenarios

Insert BP101Y into the USB port of the computer



### Start Feasycom Serial Port

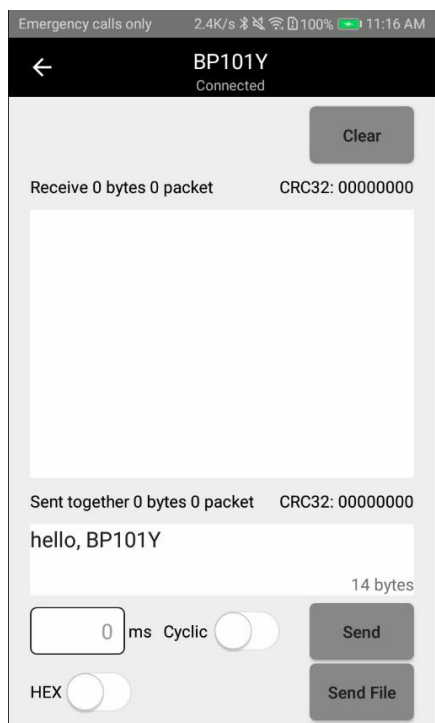


# FSC-BP101Y Get Started

## Start FeasyBlue

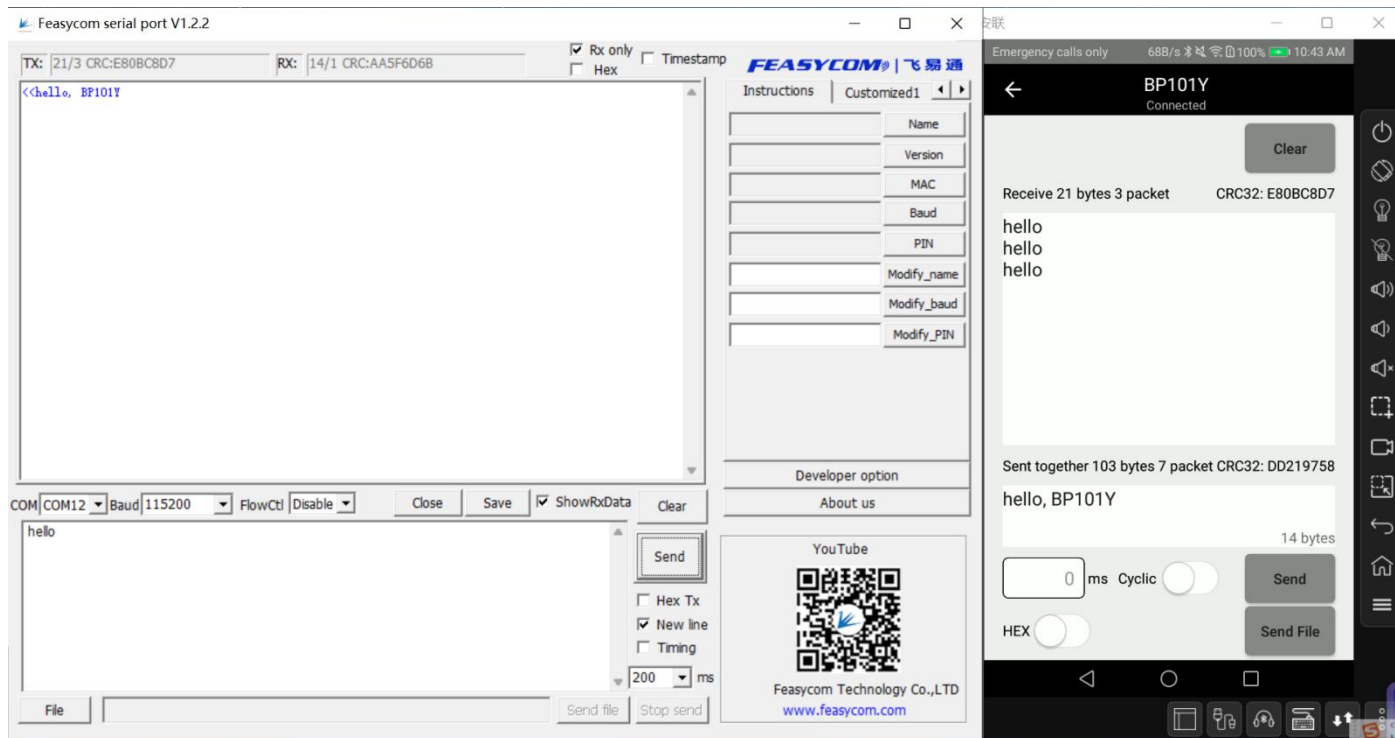


## Establish connection with BP101Y



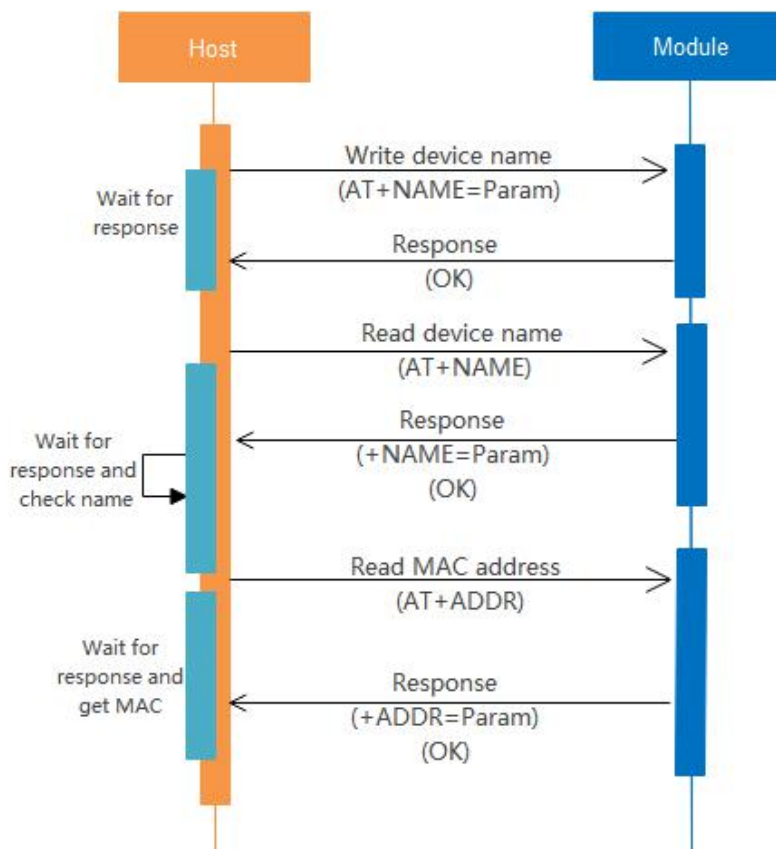


Data transmission



As a Bluetooth dongle, BP101Y transmits data transparently and displays it on the serial port assistant.

7 Typical Read/Write Parameters Interaction:



## 8 Value-added Services

- SDK
- App Support
- PCB Design
- Development Board
- Firmware Development
- Depth Customization
- Certification Request
- Turn-Key Production Testing & Manufacturing

For sales service, please contact [sales@feasycom.com](mailto:sales@feasycom.com)

For technical support, please contact [support@feasycom.com](mailto:support@feasycom.com)